



Quality Products Since 1968

Horizontal TMR Feed Mixers – Trailer & Stationary

Standard Features

- ♦ Four auger horizontal mixing system
- ♦ Large diameter augers with flighting thicknesses ranging from 3/8" to 3/4"
- ♦ Large diameter heavy wall auger tubes for extra strength to do the tough mixing jobs
- ♦ Ledger with shear bar for the harder-to-mix rations
- ♦ Heavy duty bearings on the drive end of all augers provide for years of trouble-free operation.
- ♦ External grease banks for all bearings (drive & discharge)
- ♦ Rear oil bath drive compartment lets all chains and sprockets run in oil
- ♦ Planetary gear reduction to add simplicity and reduce input H.P. requirements
- ♦ Trailer models equipped with adjustable and replaceable hitch assembly
- ♦ Rear bumper for added protection against damage
- ♦ Rear light kit
- ♦ Safety chains
- ♦ Re-capped truck tires
- ♦ All come complete with a 4 point, basic read up, read down Digi-Star electronic scale systems (stationary models are available without scales)

Options

- ♦ Various different electronic scale indicators and options
- ♦ Remote indicator and remote zeroing capabilities
- ♦ Rear wireless camera
- ♦ Hydraulic raise and lower discharge chute
- ♦ Special discharge lengths
- ♦ Hydraulic flap on discharge chute
- ♦ Manual flap on discharge chute
- ♦ Magnet in discharge flap
- ♦ Aircraft tires
- ♦ Stainless steel liners (complete to within 12" of top, or under the augers only)
- ♦ Electric diverter valve for tractors with only one set of remotes

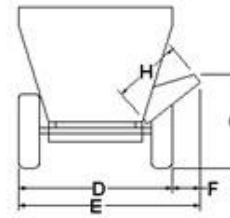
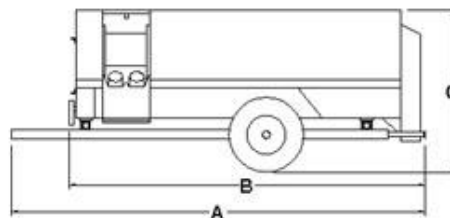
Manufactured by:

Helm Welding (1983) Limited

MODEL SIZE	4260	4310	4360	4410	4440	4500	4550	4625	4750	4900
Base Mixing Capacity (cubic feet)	260	310	360	410	440	500	550	625	750	900
A – Overall Length	190	214	238	238	244	268	248	272	272	320
B – Min. Less Hitch	148	172	196	196	202	226	206	230	230	278
C – Overall Height	87	87	90	96	100	100	112	112	118	122
D – Tread Width	81	81	81	81	94	94	106	106	106	101
E – Min. – Max.	99 – 102	99 – 102	100 1/2 – 104 1/2	100 1/2 – 104 1/2	118 - 124	118 - 124	121 - 127	121 - 127	121 - 127	121 - 127
F – Min. – Max.	18 – 21	18 – 21	19 – 23	19 – 23	18 - 24	18 - 24	18 - 24	18 - 24	18 - 24	18 - 24
G – Min. – Max.	26 – 42	26 – 42	30 – 48	30 – 48	30 - 48	30 - 48	30 - 48	30 - 48	30 - 48	30 - 48
Hopper Size	84 x 120	84 x 144	84 x 168	84 x 168	84 x 168	84 x 192	87 x 168	87 x 192	96 x 192	96 x 240
H – Discharge Length	36	36	42	42	42	42	42	42	42	42
Bottom Augers										
- tube	5 x 1/2	5 x 1/2	6 5/8 x 1/2	6 5/8 x 1/2	8 5/8 x 1/2	8 5/8 x 1/2	8 5/8 x 1/2	8 5/8 x 1/2	8 5/8 x 1/2	10 3/4 x 1/2
- flighting	3/8 & 1/2	3/8 & 1/2	3/8 & 1/2	3/8 & 1/2	1/2 & 5/8	1/2 & 5/8	1/2 & 5/8	1/2 & 5/8	1/2 & 5/8	3/4
- diameter	20	20	20	20	24	24	30	30	30	30
Top Augers										
- tube	4 1/2 x 3/8	4 1/2 x 3/8	5 x 1/2	5 x 1/2	6 5/8 x 1/2	6 5/8 x 1/2	6 5/8 x 1/2	6 5/8 x 1/2	6 5/8 x 1/2	8 5/8 x 1/2
- flighting	3/8	3/8	3/8	3/8	3/8	3/8	3/8	3/8	3/8	1/2
- diameter	20	20	20	20	24	24	28	28	28	30
Shaft Diameter										
- drive bottom	3	3	3	3 7/16	3 15/16	3 15/16	3 15/16	3 15/16	3 15/16	3 15/16
- drive top	2 1/2	2 1/2	2 1/2	3	3	3	3	3	3 7/16	3 7/16
Bearings Drive	QM	QM	QM	QM	SFCW	SFCW	SFCW	SFCW	SFCW	SFCW
Sprockets Drive	S Taper	S Taper	S Taper	S Taper	S Taper	S Taper	S Taper	S Taper	S Taper	S Taper
Tires	11 or 12R 22.5	11 or 12R 22.5	385/65R 22.5	385/65R 22.5	425/65R 22.5	425/65R 22.5	425/65R 22.5	425/65R 22.5	425/65R 22.5*	385/65R 22.5 (x4)**
Roller Chains	80-120	80-120	80-120	80H-120	100 - 140	100 - 140	100 - 160	100 - 160	100 - 160	120 - 160
Approx. Weight (lbs.)	8,600	9,750	11,150	11,250	14,000	15,200	18,000	20,940	23,500	26,540

*Model 4750 available with tandem axle
 **Model 4900 standard tandem axle

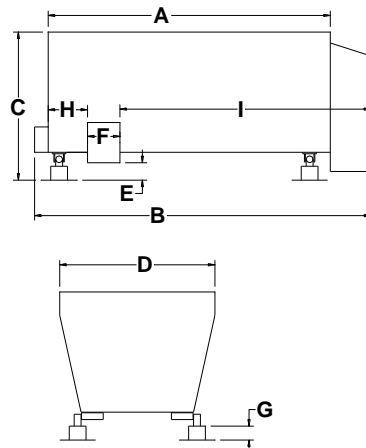
Unless otherwise indicated, all dimensions are in inches and pounds with standard equipment installed. Specifications subject to change without notice. Certain features shown may be optional.



All Horizontal Models	
Hopper Bottom – (thickness)	1/4 double
Hopper Ends - bottom	1/4
- top	10 gauge
Hopper Sides - bottom	1/4
- top	10 gauge

MODEL SIZE	4150	4185	4260	4310	4360	4410	4440	4500	4550	4625	4750
Base Mixing Capacity (cubic feet)	150	185	260	310	360	410	440	500	550	625	750
A - Hopper Length	84	96	120	144	168	168	168	192	168	192	192
B – Overall Length	102	114	148	172	196	196	199	223	204	228	230
C – Overall Height	74	74	84	84	84	90	89	89	98	99	104
D – Width	74	74	84	84	84	84	89	89	92	92	101
E – Floor to Door	21 1/2	21 1/2	16	16	16	16	14	14	14	14	14
F – Door Opening Width	19	19	24	24	24	24	30	30	30	30	30
G – Stand Height	12	12	12	12	12	12	12	12	12	12	12
H – Door to Front	16	16	18	18	18	18	28	28	28	28	28
I – Door to Rear	67	79	92	116	140	140	126	150	126	150	150
Hopper Size	72 x 84	72 x 96	84 x 120	84 x 144	84 x 168	84 x 168	84 x 168	84 x 192	87 x 168	87 x 192	96 x 192
Bottom Augers											
- tube	4 1/2 x 3/8	4 1/2 x 3/8	5 x 1/2	5 x 1/2	6 5/8 x 1/2	6 5/8 x 1/2	8 5/8 x 1/2	8 5/8 x 1/2	8 5/8 x 1/2	8 5/8 x 1/2	8 5/8 x 1/2
- flighting	1/2	1/2	3/8 & 1/2	3/8 & 1/2	3/8 & 1/2	3/8 & 1/2	1/2 & 5/8	1/2 & 5/8	1/2 & 5/8	1/2 & 5/8	1/2 & 5/8
- diameter	18	18	20	20	20	20	24	24	30	30	30
Top Augers											
- tube	4 x 5/16	4 x 5/16	4 1/2 x 3/8	4 1/2 x 3/8	5 x 1/2	5 x 1/2	6 5/8 x 1/2	6 5/8 x 1/2	6 5/8 x 1/2	6 5/8 x 1/2	6 5/8 x 1/2
- flighting	3/8	3/8	3/8	3/8	3/8	3/8	3/8	3/8	3/8	3/8	3/8
- diameter	18	18	20	20	20	20	24	24	28	28	28
Roller Chains	80	80	80 - 120	80 - 120	80 - 120	80H - 120	100 - 140	100 - 140	100 - 160	100 - 160	100-160
Approx. Weight (lbs.)	4,200	4,500	8,600	9,750	11,150	11,250	14,000	15,200	18,000	20,940	21,500

Unless otherwise indicated, all dimensions are in inches with standard equipment installed. Specifications subject to change without notice. Certain features shown may be optional.



All Horizontal Models	
Hopper Bottom – (thickness)	1/4 double
Hopper Ends - bottom	1/4
- top	10 gauge
Hopper Sides - bottom	1/4
- top	10 gauge



Quality Products Since 1968

Horizontal TMR Feed Mixers - Truck Mount Models

Truck mounted mixers are designed to fit the farmer's special needs. All models are available in either P.T.O. or hydrostatic drives.

Contact your local dealer or Helm Welding directly for special requirements and pricing on a proven, well manufactured truck mount mixer.

Standard Features:

All truck mount feed mixers have these standard equipment features:

- ♦ Four auger mixing system
- ♦ Large diameter augers with 5/8" and 3/8" thick flighting (3/4" on 4900 model)
- ♦ Large diameter heavy wall auger tubes for extra strength to do the tough mixing jobs
- ♦ Ledger with shear bar for the harder-to-mix rations
- ♦ Heavy duty SFCW flanged block bearings on the drive end of all augers, equipped with special seals and covers, provide for years of trouble-free operation
- ♦ 3 auger discharge on models 4500, 4550, 4750 & 4900
- ♦ External grease banks on all drive and discharge bearings
- ♦ Rear oil bath drive compartment lets all chains and sprockets run in oil
- ♦ Planetary gear reduction to add simplicity and reduce input H.P. requirements
- ♦ All sprockets on the main drive system equipped with S-Taper hubs for ease of maintenance
- ♦ All come complete with a Digi-Star basic read up, read down electronic scale system

Options:

- ♦ Choice of various different electronic scale indicators
- ♦ Remote indicator and remote zeroing capabilities
- ♦ Hydraulic raise and lower discharge chute
- ♦ Special discharge lengths
- ♦ Hydraulic flap on discharge chute
- ♦ Manual flap on discharge chute
- ♦ Magnet in discharge flap
- ♦ Stainless steel liner and augers
- ♦ Many other options available upon request

Manufactured by:

Helm Welding (1983) Limited

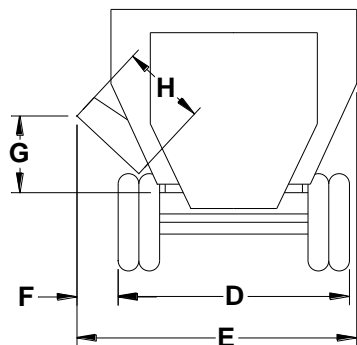
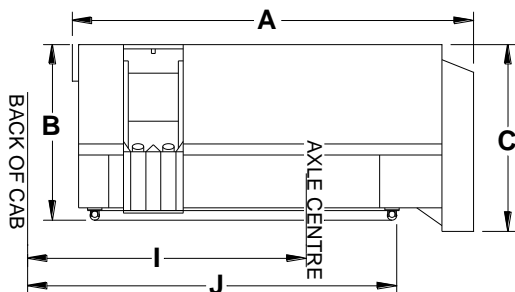
MODEL SIZE	4440	4500	4550	4625	4750	4900
Base Mixing Capacity (cubic feet)	440	500	550	625	750	900
A – Overall Length	195 1/2	219 1/2	195 1/2	219 1/2	219 1/2	267 1/2
B – Mixer Height	72 1/2	72 1/2	81 1/2	81 1/2	87 1/2	87 1/2
C – Overall Height	79	79	90	90	96	96
D – Tread Width	96	96	96	96	96	96
E – Min. – Max.	114 – 117	114 – 117	118 – 121	118 – 121	120 – 123	120 – 123
F – Min. – Max.	18 – 21	18 – 21	22 – 25	22 – 25	22 – 25	22 – 25
G – Min. – Max.	12 – 27	12 – 27	12 – 27	12 – 27	12 – 27	12 – 27
H – Discharge Length	36	36	36	36	36	36
I – Cab to Axle Min.	*125 / **103	*147 / **127	*125 / **106	**130	**130	**164
J – Cab to Frame Min.	*158 / **158	*180 / **180	*158 / **158	**180	**180	**226
Hopper Size	84x168	84x192	87x168	87x192	96x192	96x240
Bottom Augers						
- tube	8 5/8	8 5/8	8 5/8	8 5/8	8 5/8	10 3/4
- flighting	1/2 & 5/8	1/2 & 5/8	1/2 & 5/8	1/2 & 5/8	1/2 & 5/8	3/4
- diameter	24	24	30	30	30	30
Top Augers						
- tube	6 5/8	6 5/8	6 5/8	6 5/8	6 5/8	8 5/8
- flighting	3/8	3/8	3/8	3/8	3/8	1/2
- diameter	24	24	28	28	28	30
Shaft Diameter						
- drive bottom	3 15/16	3 15/16	3 15/16	3 15/16	3 15/16	3 15/16
- drive top	3	3	3	3	3 7/16	3 7/16
Bearings Drive	SFCW	SFCW	SFCW	SFCW	SFCW	SFCW
Sprockets Drive	S Taper	S Taper	S Taper	S Taper	S Taper	S Taper
Scale System	4 Point	4 Point	4 Point	4 Point	4 Point	4 Point
Roller Chains	100-140	100-140	100-160	100-160	100-160H	120 – 160H
Approx. Weight (lbs.)	12,700	13,800	16,500	19,400	20,200	24,500

*single axle **double axle

Unless otherwise indicated, all dimensions are in inches with standard equipment installed.

Specifications subject to change without notice.

Certain features shown may be optional.



All Horizontal Models	
Hopper Bottom – (thickness)	1/4 double
Hopper Ends - bottom	1/4
- top	10 gauge
Hopper Sides - bottom	1/4
- top	10 gauge